



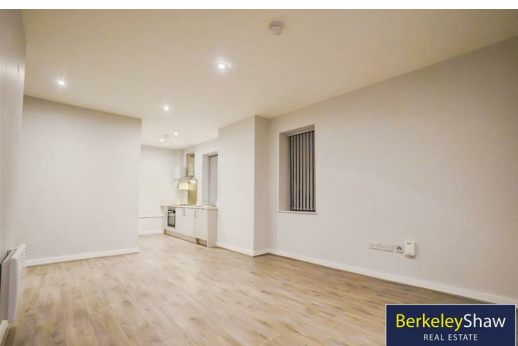
## Sky Gardens, 16 Crosby Road North, Liverpool, L22 0AD

**£795 PCM**

Sky Gardens is a stunning residential development set in the heart of one of Liverpool's most affluent suburbs. This 1 BEDROOM UNFURNISHED APARTMENT on GROUND FLOOR is Available in this development is within minutes of Crosby Beach, these beautifully-appointed apartments are designed for professionals working in the city, but looking for a relaxed coastal lifestyle. Crosby Beach is home to Sir Antony Gormley's iconic art installation, 'Another Place'.

Crosby was recently named by 'The Sunday Times' as one of the top 5 places to live in the North West and is popular with sports stars and celebrities. Crosby Gardens complete with concierge, integrated appliances, and optional on-site car parking (fees apply).

Council Tax :A  
Deposit: £795.00  
Minimum Term : 12 months



## Hallway

Laminate floor, electric wall heater

## Shower Room

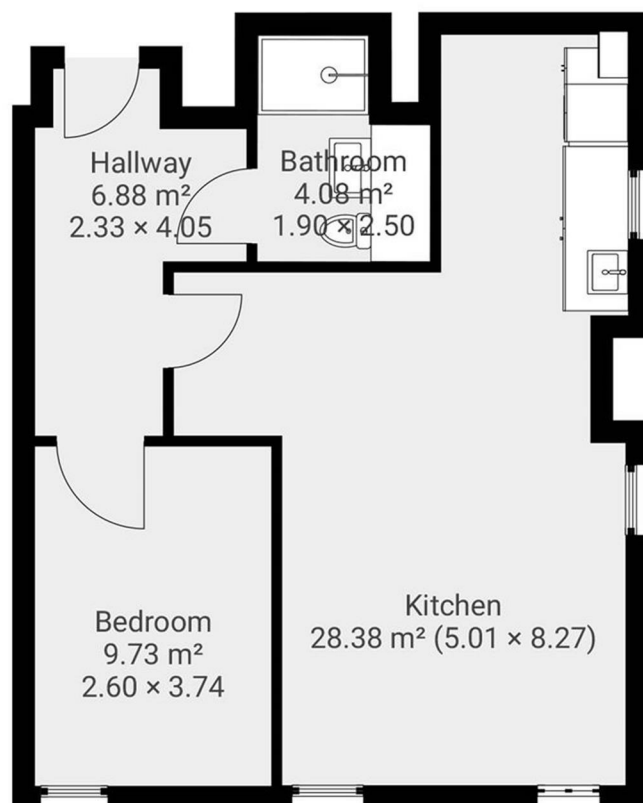
Part tiled walls, large wall mirror, walk in shower cubical with glass screen and door, electric shower, low level w.c. sink electric ladder towel rail.

## Bedroom

Double glazed window, laminate flooring, electric wall heater

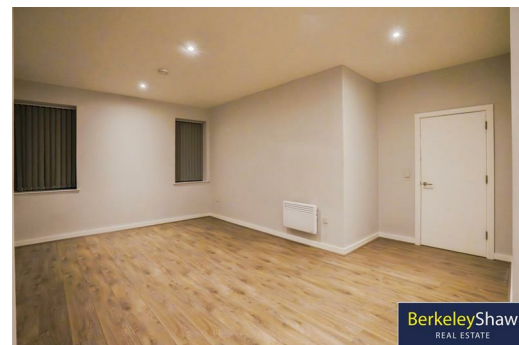
## Open Plan Lounge Kitchen

Double glazed window, electric wall heater, laminate flooring, kitchen comprises of a range of fitted wall and base units, work surfaces, stainless steel sink with mixer tap, integrated appliances include under counter fridge with ice box, electric oven, electric hob, extractor hood, washer dryer



Energy Efficiency Rating		
	Current	Potential
Very energy efficient - lower running costs		
(92 plus) A		
(81-91) B		
(69-80) C		
(55-68) D		
(39-54) E		
(21-38) F		
(1-20) G		
Not energy efficient - higher running costs		
England & Wales	EU Directive 2002/91/EC	

Environmental Impact (CO <sub>2</sub> ) Rating		
	Current	Potential
Very environmentally friendly - lower CO <sub>2</sub> emissions		
(92 plus) A		
(81-91) B		
(69-80) C		
(55-68) D		
(39-54) E		
(21-38) F		
(1-20) G		
Not environmentally friendly - higher CO <sub>2</sub> emissions		
England & Wales	EU Directive 2002/91/EC	



Berkeley Shaw Estate Agents Limited.  
Company No. 0784754

Berkeley Shaw Real Estate Limited.  
Company No. 05206927

